

CONSUMER WEB PRESENTMENT

To further increase awareness of energy consumption, Olameter has developed a comprehensive Consumer Web-Presentation Solution that allows end-use customers to analyze their own energy usage.



Custom built to meet the unique requirements of energy usage and rate information presentation, Olameter's Consumer Web-Presentation solution allows utility end-use customers to monitor their consumption patterns more easily and efficiently. This service includes utility access functionality for Customer Service support, Time-of-Use administration, cost structures, as well as utility notices and conservation tips that can be created by the utility and viewed by their customers.

DATA IMPORT

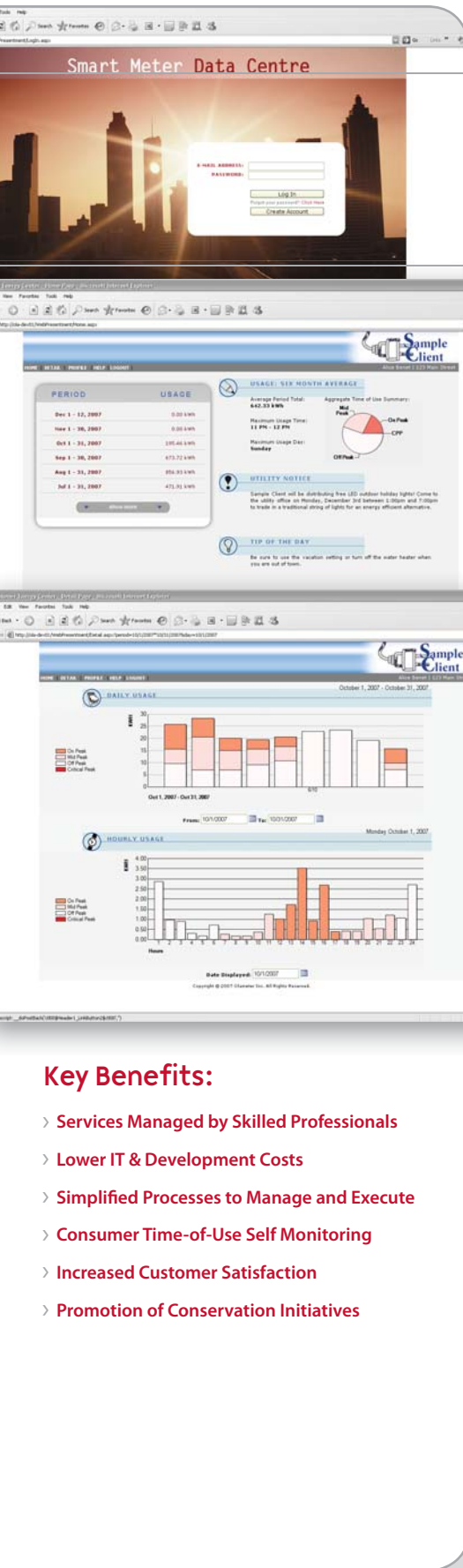
Olameter's Consumer Web-Presentation Solution is capable of importing TOU data in various formats, allowing for the integration of data from multiple sources, including AMI head-end software, data collection systems, MDM/R, and Billing/CIS applications.

Regardless of the data source, our Consumer Web-Presentation solution can interpret the interval values, process the information and present hourly and daily data within calendar month or true billing cycles. Information transmitted from each source is imported directly into our secure Consumer Web-Presentation application, providing utility customers with reliable, verified usage data. As additional data is made available from other systems, such as pricing signals from energy suppliers, Olameter is capable of seamlessly integrating these data streams into the web portal.



CONSUMER WEB PRESENTMENT

Visually-coded rate buckets will help the consumer distinguish Time-of-Use statistics included in their billing cycle.



Key Benefits:

- › Services Managed by Skilled Professionals
- › Lower IT & Development Costs
- › Simplified Processes to Manage and Execute
- › Consumer Time-of-Use Self Monitoring
- › Increased Customer Satisfaction
- › Promotion of Conservation Initiatives

DATA ACCESS

Customers have full access to their data through our comprehensive, secure web portal. Designed as a web client application, Olameter's Consumer Web-Presentation solution is accessed via industry-standard internet browsers. The simple Graphic User Interface (GUI) provides easy navigation for all user-levels.

Consumers can create individual accounts for viewing their consumption information. Once a consumer has registered, the web portal provides immediate access to two months of meter data for their account, and begins accumulating additional months, up to a defined maximum archive length. Visually-coded rate buckets, such as On-Peak, Mid-Peak, Off-Peak and Critical Peak, will help the consumer distinguish Time-of-Use statistics included in their billing cycle.

CLIENT ADMINISTRATION

Customers can receive valuable communications directly from the utility. Through the Client Administration area of the web portal, notifications and conservation tips can be added, altered, and scheduled directly by the utility. With the ability to integrate corporate logos and branding, this unique administration tool facilitates customization of the graphic user interface to mirror our client's current web applications.

By utilizing simultaneous log-in capabilities, utility Customer Service Representatives (CSRs) will be able to view precisely what the consumer views in order to answer usage enquiries more effectively. The CSR Administration portal grants read-only access the customer's account, which allows the CSRs to view the information and assist the registered users without compromising data or customer privacy.

HOME CONSUMPTION PROFILE

Once customers complete a home profile online, the Consumer Web-Presentation solution not only displays how their household uses energy, but can also provide utility-customized energy-saving tips based on their unique information. Consumers can view a detailed home energy analysis, complete with savings and conservation tips. They can compare daily temperatures against their usage graphs, which allows them to review the information to see the effect weather or other factors may have had in their total consumption throughout the period.

Based on the information provided by the consumer, the utility can gather statistical information on specific territories and designate tips and notices to particular electricity usage categories, such as electric heating or water heater customers. Once statistical information is gathered, the client can grant different levels of access to the information and allow customers to compare their own information to averages of similar consumption profiles within their designated territory.

SECURITY

Olameter's security infrastructure includes advanced firewalls and SSL encryption for the application and database servers used within our architecture. Security features are used to prevent unauthorized access to consumer information, to protect the stored data and to grant different degrees of access to different functions (i.e. CSR, Utility Administration).

End-use consumer authentication is required for access to the usage data. By requiring the consumer account holder to input data from three different information locations, the solution's secure log-in is designed to ensure the highest levels of privacy. Email authentication is sent to verify registration, and is also required to process changes that occur within the registered user's account.