

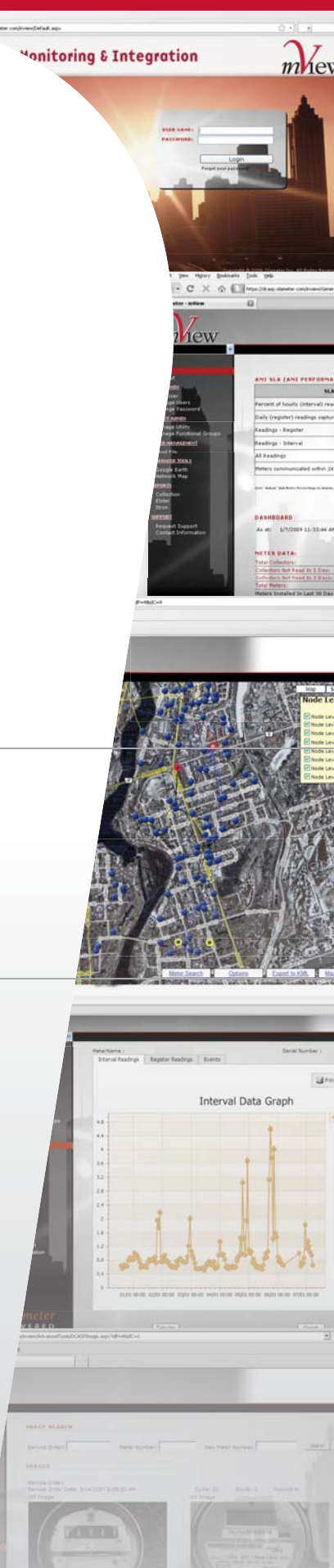
# *inView* AMI SYSTEM MONITORING & INTEGRATION

Olameter's *inView* application processes AMI data to allow system monitoring and reporting, providing decision makers with the resources necessary for managing system health more efficiently.



Olameter's *inView* application is comprised of a secure web-enabled user interface, comprehensive database, and state of the art data translation and processing engine. Together these elements provide a single point of access for collecting, monitoring, reporting, event notification and mapping of AMI system data.

Olameter's *inView* application processes AMI data to allow system monitoring and reporting, providing decision makers with the resources necessary for managing system health more efficiently. Any data natively available from an AMI head-end system is processed and transferred into the *inView* AMI system monitoring and integration platform. As a vendor-agnostic tool, data can be collected from various technologies and reviewed by clients within one comprehensive web-portal.



# inView AMI SYSTEM MONITORING & INTEGRATION

*inView* allows clients to assess conditions, view their entire network at once, and fully analyze any issues and their relation to the AMI system as a whole.

## MONITORING, REPORTING, & INTEGRATION

Data monitoring and reporting is intrinsic to the operation of AMI Systems. Within *inView* all data, including events and alerts are processed, statuses are quantified and displayed within a quick-reference dashboard, and additional reports and tools are available to allow the back-office investigation of any system issues.

*inView* provides a variety of reports ranging from LAN Performance and System Messaging to Voltage Graphs, Interval Graphs and more. Additional reports can be customized to include any data natively available from the AMI technology.

In addition, data is presented using an embedded version of Google Maps, allowing clients to view the system and its performance graphically from within the portal. Communication issues and missing data are represented through various visual cues, with direct links to further meter-specific information. This allows clients to assess the condition, view their entire network at once, and fully analyze any issues and their relation to the AMI system as a whole. Through integration with workforce management systems, including Olameter's *onService* offering, service orders can be initiated for any issues requiring further in-field investigation.

## DATA IMPORT & EXPORT

Olameter's *inView* application directly imports metering and operational data into its own secure database, designed to ensure the highest levels of client privacy. Data is received from multiple clients and separated through rules embedded in the database. *inView* is capable of importing meter data in multiple native file formats, allowing for the integration of data from

multiple AMI equipment vendors and other data management systems. Currently *inView* can import HHF, and MV-RS DCI formats.

Through *inView*, clients benefit from the use of their existing interfaces into enterprise systems, thus minimizing the costs associated with back-office system integration and support. Regardless of the data format received from various technologies, *inView* can export data in several industry-standard electronic formats. Export capabilities currently include MS-Excel, HHF, MVRS, and interfaces to consumer web-presentation and workforce management software; Olameter can also provide customized interfaces by client request.

## DATA ACCESS & SECURITY

Designed as a thin-client application, Olameter's *inView* is accessed via industry-standard browsers. A tiered security framework allows each client to set up and customize user accounts for employees requiring specific levels of access. Clients are given the ability to create individual accounts for employees and assign unique default dashboard viewing and reporting capabilities for each account.

## ASP DATA COLLECTION

In addition to processing AMI files obtained through utility-owned head-end systems, Olameter is able to offer the collection of data through our ASP offering of Elster MAS, Itron Fixed Network 2.0, and SmartSynch TMS applications. Through this arrangement, Olameter purchases, licenses, hosts and maintains all hardware and software required for the collection of data from your AMI system within our state-of-the-art Data Centers.

